

WELCOME

DQ[®]

CAMP-IN

Your shadow puppet
guide to the
great indoors



 **PLAY *at* HOME**

A wooden sign with a bird and musical notes above it. The sign is made of horizontal wooden planks and has the word "Hello" written in a dark brown, sans-serif font. Above the sign, a small white bird with an orange beak is perched on a wooden post, and two musical notes are floating in the air.

Hello

Happy Campers

WELCOME TO THE DQ® CAMP-IN.
THE HAPPIEST, FRIENDLIEST, MOST FUN
CAMPSITE IN ALL THE GREAT INDOORS—
WHERE THE WILDEST SHADOW PUPPET ADVENTURE
AWAITS IN YOUR VERY OWN LIVING ROOM.

ALL YOU NEED ARE YOUR OWN TWO HANDS,
A FLASHLIGHT AND A LITTLE IMAGINATION.

**BEFORE WE HIT THE TRAILS,
LET'S SET UP CAMP.**



STEP 1

TURN OFF THE LIGHTS TO BRING THE NIGHT SKY INSIDE.

STEP 2

WARM UP YOUR HANDS AND VOICES. YOU'LL NEED BOTH TO BRING YOUR SHADOW PUPPET FRIENDS TO LIFE.

STEP 3

TURN ON YOUR FLASHLIGHT AND POINT IT TOWARD THE NEAREST WALL OR CEILING — THE BIGGER AND BRIGHTER THE GLOW THE BETTER.

You're all set

IT'S TIME TO HIT THE TRAILS.
IMAGINE WHAT FRIENDS YOU'LL
MEET ALONG THE WAY...





LOOK

A Lone Wolf

WILL YOU JOIN HIS WOLF PACK?
USE TWO HANDS TO MAKE YOUR OWN WOLF AND SAY HELLO.





WOLVES LOVE HOWLING AT

The Moon

TAKE A DEEP BREATH AND SEE WHO CAN HOWL
THE LOUDEST. WOW! I THINK THE MOON HEARD YOU.





WHOSE EARS ARE THOSE? NONE OTHER THAN

The Rabbit

CAN YOU WIGGLE YOUR EARS LIKE THE RABBIT?
WIGGLE, WIGGLE, YOU'RE DOING IT!



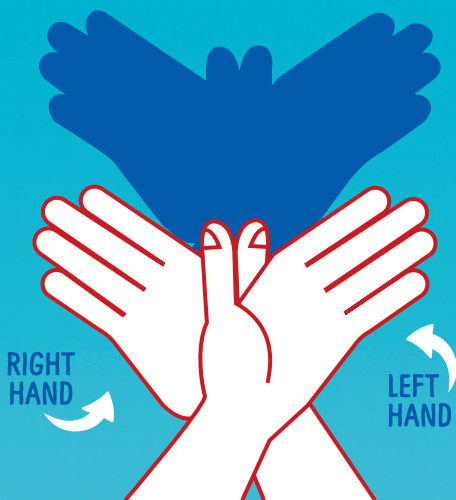


RABBITS LIVE IN

The Red Spoon Forest

FIND THREE SPOONS AND GIVE YOUR RABBIT A HOME. CAN YOU HOP AS HIGH AS THE TREES? I BET YOU CAN.





LOOK HIGH IN THE SKY. IT'S A BEAUTIFUL

Butterfly

FLAP YOUR WINGS AND SEE WHO CAN DO
THE CRAZIEST BUTTERFLY TRICK. YOU'RE A NATURAL!



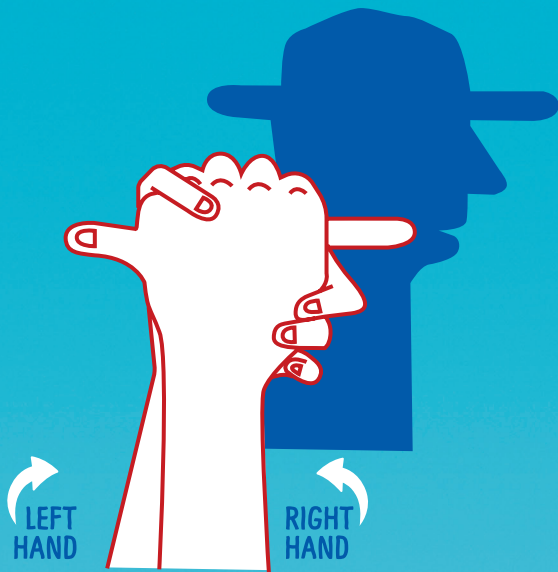


LOOK DOWN ON THE GROUND. A TINY

Snail

SLIDING ALONG. CAN YOU MOVE AS SLOW
AS THE SNAIL? SNAILS ARE VERRRRYYY SLOWWW.





Ranger Ted

IS THAT YOU? CALLING THE BIRDS WITH YOUR WHISTLIN' TUNE? CAN YOU WHISTLE LIKE RANGER TED? TWEET, TWEET, YOU SURE CAN.

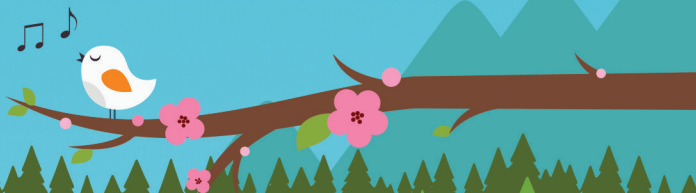




CAN YOU BELIEVE IT?

A Little Bird

HEARD YOUR TUNE, AND SHE HAS SOMETHING TO SAY TO YOU.
WHAT DO YOU THINK SHE IS SAYING?

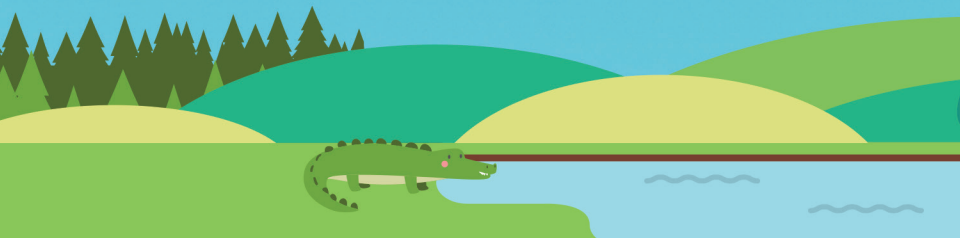




WHO'S THAT IN THE POND? WHY, IT'S A FRIENDLY

Crocodile

WITH THE SHARPEST SMILE IN THE FOREST. SAY CHEESE AND
SMILE AT THE CROC. DON'T GET TOO CLOSE!

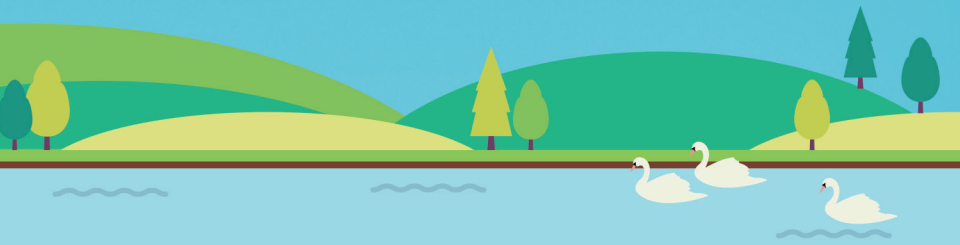




WHO ELSE LIVES IN THE POND? OF COURSE,

The Swan

SING A SONG WITH THE SWAN. HER FAVOURITE SONG
HAPPENS TO BE YOUR FAVOURITE SONG, TOO.



More critters
are calling.
More adventure
awaits.

LOOK AT ALL THE FUN FRIENDS YOU STILL
HAVE TO MEET OUT ON THE TRAILS...





Deer



Squirrel



Goose



Spider

SO LONG FOR NOW, HAPPY CAMPERS.
YOU'LL ALWAYS HAVE A TENT
AT THE DQ® CAMP-IN.

SHARE YOUR FAMILY CAMP-IN PHOTOS
WITH @DQCANADA USING #DQPLAYATHOME.

 **PLAY *at* HOME**

